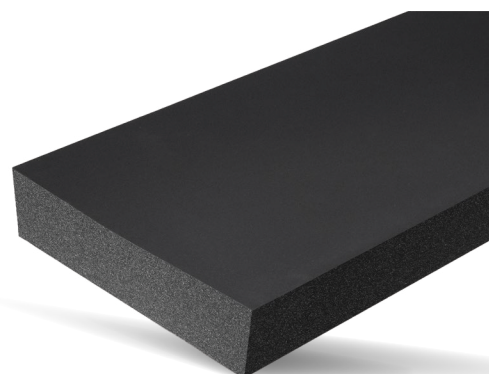




# EPDM 120

- ✓ **Ottimo rapporto qualità/prezzo.**  
*Good value for money.*
- ✓ **Ottima elasticità e impermeabilità all'acqua.**  
*Very good elasticity and water resistance.*



## CAMPI D'IMPIEGO APPLICATIONS

- |                                    |   |
|------------------------------------|---|
| [IT]                               | [EN]  |
| • Automotive                       | • <i>Automotive</i>                         |
| • Riscaldamento-condizionamento    | • <i>Heating-conditioning</i>               |
| • Ferroviario                      | • <i>Railway</i>                            |
| • Costruzioni (infissi-isolamento) | • <i>Construction (fixtures-insulation)</i> |
| • Aerospaziale                     | • <i>Aerospace</i>                          |
| • Navale                           | • <i>Naval</i>                              |
| • Macchine movimento terra         | • <i>Constructions Equipment</i>            |
| • Macchine Utensili                | • <i>Machine tools</i>                      |
| • Elettrico                        | • <i>Electric</i>                           |
| • Fotovoltaico                     | • <i>Photovoltaic</i>                       |
| • Energia Eolica                   | • <i>Wind energy</i>                        |
| • Energia Elettrica                | • <i>Electric energy</i>                    |
| • Sportivo                         | • <i>Sporty</i>                             |
| • Anti-infortunistica              | • <i>Safety</i>                             |



## SPECIFICHE TECNICHE TECHNICAL DATA SHEET

	NORME / STANDARD	VALORE / RESULTS
<b>Tipologia Materiale</b> <i>Material Base</i>		EPDM-based
<b>Struttura cellulare</b> <i>Cells structure</i>		Cellule Chiuse / <i>Closed Cells</i>
<b>Colore</b> <i>Color</i>		Nero / <i>Black</i>
<b>Densità</b> <i>Density</i>	ISO 845	120 ± 20 kg/m <sup>3</sup>
<b>Carico Deformazione</b> <i>Compression Deflection</i>	ASTM D1056 NFR 99-211	25% 13.8-62.1 kPa 50% 80-160 kPa
<b>Compressione</b> <i>Compression Set</i>	ASTM D1056 NFR 99-211	23°C, 50% after 22h 40°C, 50% after 22h
<b>Assorbimento Acqua</b> <i>Water Absorption</i>	NFR 99-211	≤ 5%
<b>Durezza</b> <i>Hardness</i>	ASTM D 2240	33 Sh 00
<b>Temperatura</b> <i>Temperature</i>	Costante / <i>Constant</i> Intermittente / <i>Intermittent</i>	-40°C / +100°C +115°C
<b>Resistente a</b> <i>Resistance to</i>	Ozono, aria e UV / <i>Ozone, Air + UV</i>	
<b>Certificazioni</b> <i>Certifications</i>	ASTM D1056-07 BMW N 603 00.0 GMW 17408 PSA B65 4360  RENAULT 03-10-102 VW TL 52065	2A1/2A2 B3 C1 F1 M P A 941 EPDM 310.06 Class II Type IV Approved by PSA FTM 37 0010 EPDM 10X C2 08 3100X0 2 C 08 B3 C2 P2 Depends on drawing requirements
<b>Norme Ambientali</b> <i>Environmental Protection</i>	REACH - RoHS GADSL CFC Free compliant Nitrosamine free	



## FORMATI DISPONIBILI AVAILABLE FORM



Rotoli / *Rolls*



Placche / *Sheets*



Profili / *Profiles*



BARRE / *BARs*